

AUTOMATIC BAND SEALER

• Use:

This sealer is suitable for sealing all kinds of plastic films and for making bags. It can be widely used in fields of food, medicine, cosmetics, local specialities, chemical products, electrical components, vegetable seeds, the preservation of cultural relics, etc. It is the finest sealing equipment used in batches in factories, shops as well as in service trades.

• Performances and Features:

This Sealer, equipped with the constant temperature control of electron and with the stepless speed transmission set, can seal and make all shapes of bags of plastic films, and be used as a necessary accessory in all kinds of packing assembly line. The sealing length is not limited. It is characterized by the efficiency of the continuous sealing, the quality, of proper structures, and the convenient operation. It can be used as a horizontal, a vertical or horizontal sealer, as well as a console one. The horizontal sealer is suitable for packing dry goods and then sealing the bag, while the vertical one for powered liquid goods. This sealer may have a printing connector. Those, such as the factory's name, brand, date of production, terms of validity, check number and lot number can be printed on while sealing. The printing should be finished and the date and the lot number can be altered according to the requirement. It is used conveniently and caters for the hygienic law of medicine and foods. The sealer can be connected with a counting set to work and to be managed easily.

• Structures and Theories:

This Sealer is made up of the frame, the speed regulator, sealing temperature control system, transmission set, conveyer, printing set, etc.

When the power supply has been put through, electrothermal elements produce heat which greatly raises the temperature of both the upper and the lower heat blocks, and adjusts the temperature of the sealing material as well as the speed through the temperature controller and speed regulator. The plastic packing bag is transmitted by the conveyer belt. Put the sealing part of the bag between the two working sealing belts. Clamped by the belts, the sealing part is pressed by the heated blocks in heating area. The plastic film is adhered after being heated. Then, it is conveyed into the cooling area to be cooled, also being clamped with the sealing belts. Press it with knurl wheel or printing wheel, then there will appear stripes and nets, as well as the words needed.

The driving part of the sealer is made up of the sealing belt, guiding belt and the conveyer belt driven by a motor. All of these operate synchronously.

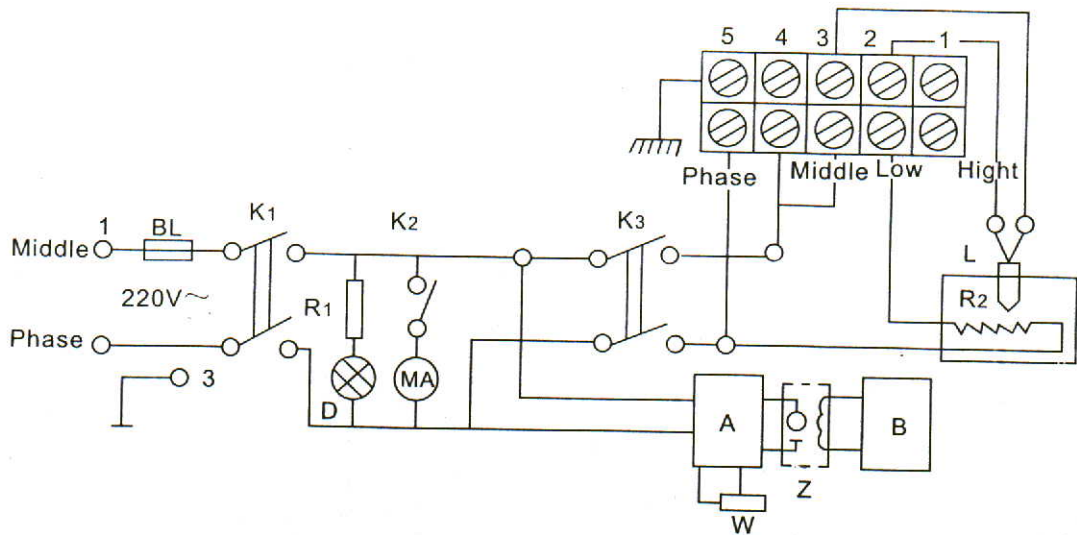
Model	FR-800 DBF-900			FR-880A		
	I	II	III	I	II	III
Voltage	220V/50Hz (115/60Hz)					
Power	500W			500W		
Sealing speed	0~12m/min			0~8m/min		
Sealing width	6~12mm			6~12mm		
Temperature range	0~300 C					

AUTOMATIC BAND SEALER

• Major Technological Parameters:

Model	FR-800 DBF-900			FR-880A		
	I	II	III	I	II	III
Printing speed	≤39					
Conveyor loading	1kg×3			1kg×3		
Dimension	800×420 ×320(MM)	800×380 ×550(MM)	800×420 ×320(MM)	800×420 ×320(MM)	800×380 ×55300(MM)	800×420 ×320(MM)
Weight	30KG	35KG	38KG	32KG	37KG	40KG

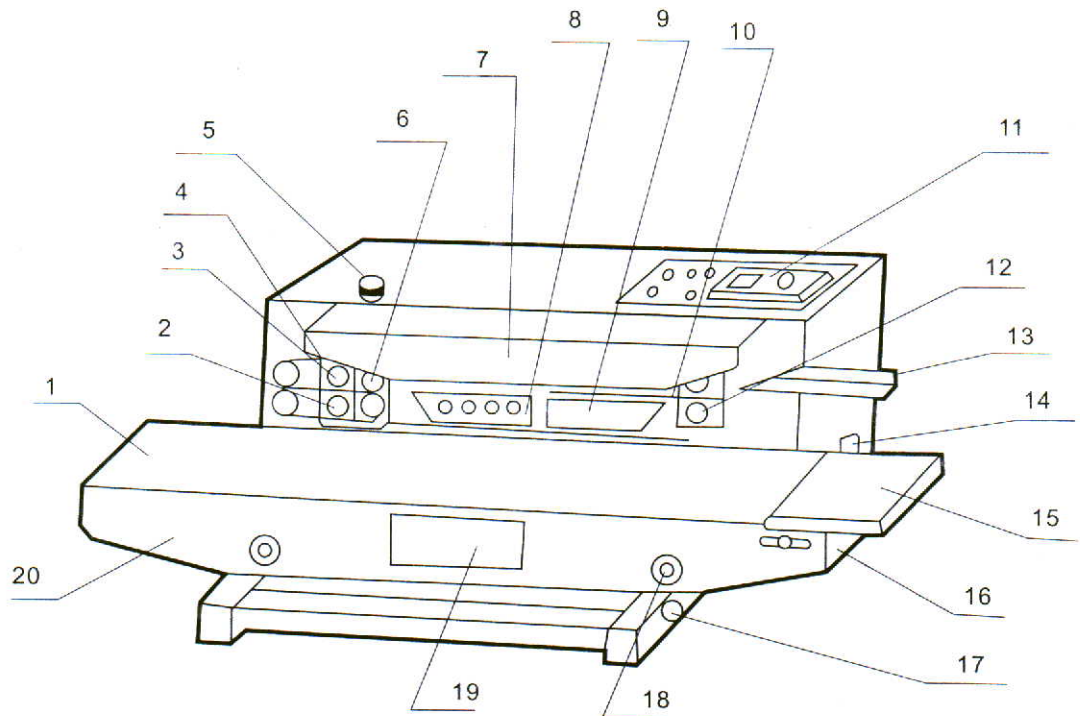
• Figures of Electrical Theory



Note: K1-Switch of the power supply. K2-Switch of fan. K3-Switch of heat sealing. BL-Fuse pipe Resistance. D-Indicating light. MA-Alternating current fan. W-Electric potential speed regulator. Z-Direct current electric motor. L-Thermocouple. R2-Heater. A-Thyatron rectifier. B-Diode rectifier.

• USE WAY

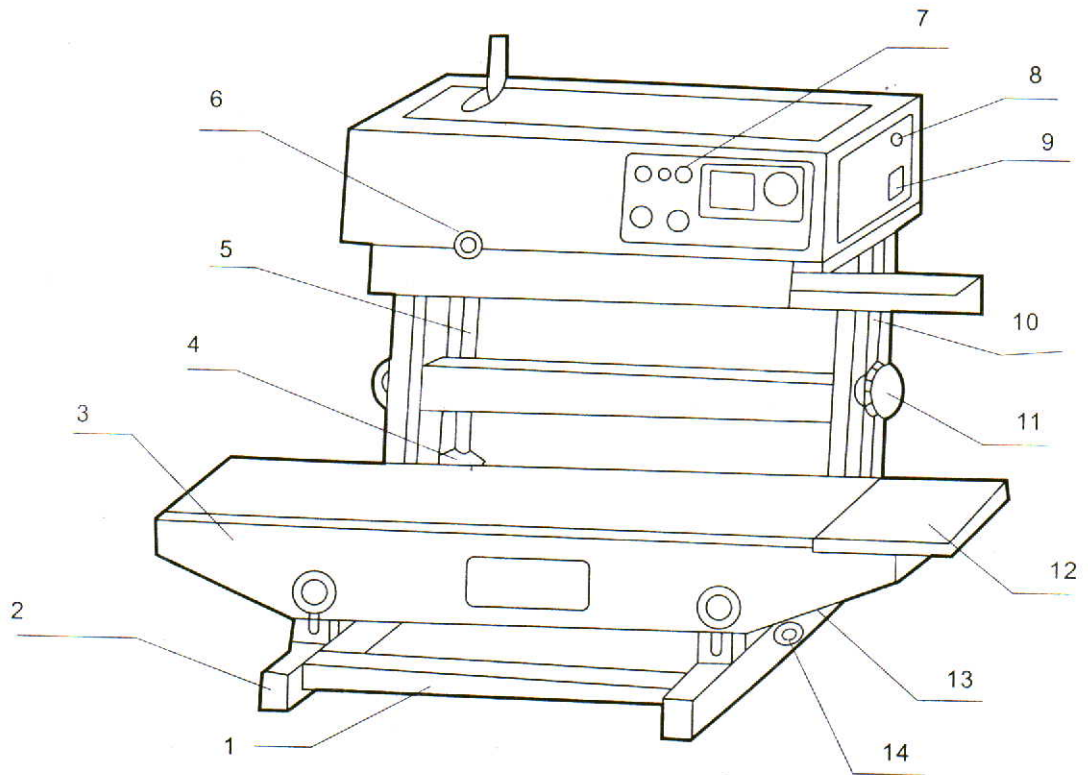
1. Legend



I horizontal sealer

- 1.Conveyer belt 2.Rubber wheel 3.Knurl wheel(printing wheel) 4.Wheels holder 5.Pressure knob
 6.Driving wheel 7.Safety cover 8.Cooling block 9.Heating block 10.Sealing belt 11.Control panel
 12.Driven wheel 13.Sealing width regulator 14.Socket of the power supply conveyer belt 17.Knob
 for the input and output of the conveyer table 18.Height regulator of the conveyer table 19.Trade mark
 20.Conveyer table

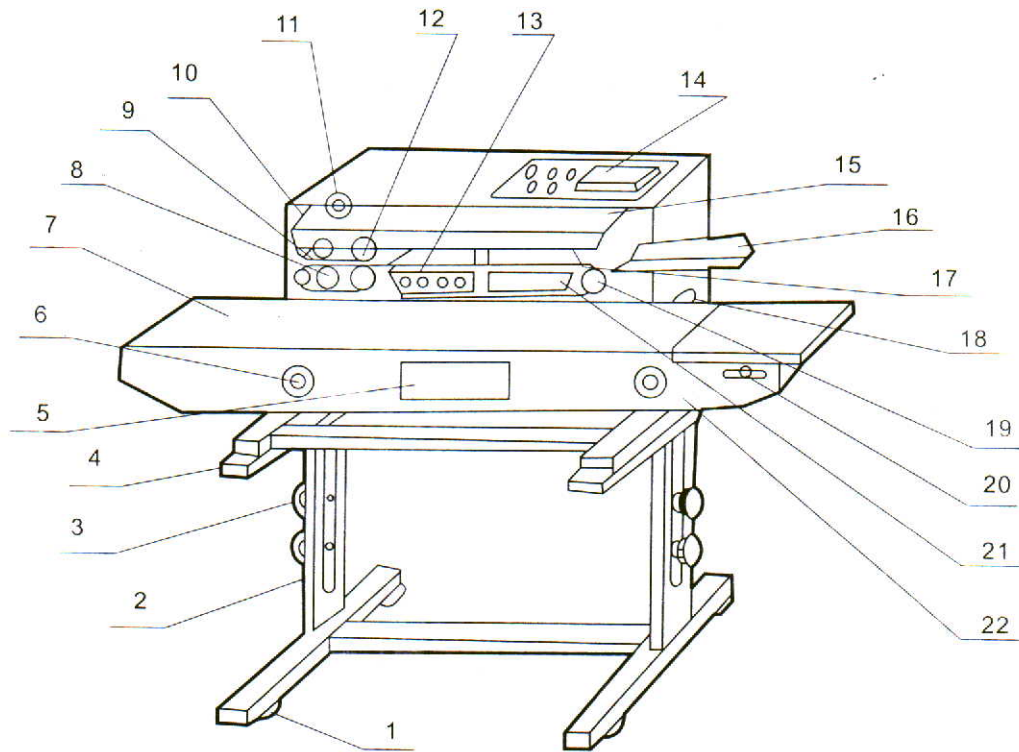
AUTOMATIC BAND SEALER



II Vertical sealer

1. Cross-piece (Vertical) 2. Tripod (Vertical) 3. Conveyor table 4. Umbrella gear support 5. Vertical long shaft 6. Pressure knob 7. Control panel 8. Insurance pipe 9. Socket of the power supply 10. Support (horizontal) 11. Height regulator 12. Fixed working table 13. Conveyor table support 14. Clamping knob of the conveyor table

AUTOMATIC BAND SEALER

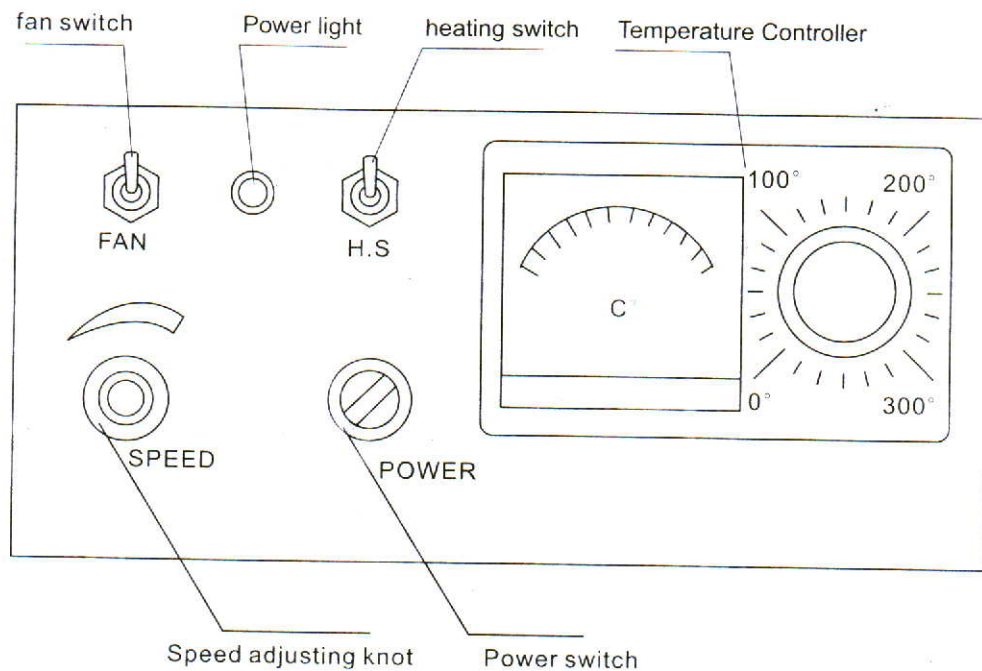


III Console sealer

- 1.Wheel base 2.Lower frame 3.Frame knob 4.Upper frame 5.Trade mark 6.Heigh ulator of the conveyer table 7.Conveyer belt 8.Rubber wheel 9.Knurl wheel(printing)wheel) 10.Wheel holder 11.Pressure regulating wheel 12.Driving wheel 13.Cooling block 14.Control panel 15.Safety cover 16.Sealing width regulator 17.Scaling belt 18.Socket of the power supply and insurance 19.Driven wheel 20.Screw for fastening and loosening the conveyer belt 21.Heating block 22.Conveyer table

AUTOMATIC BAND SEALER

2. Control panel



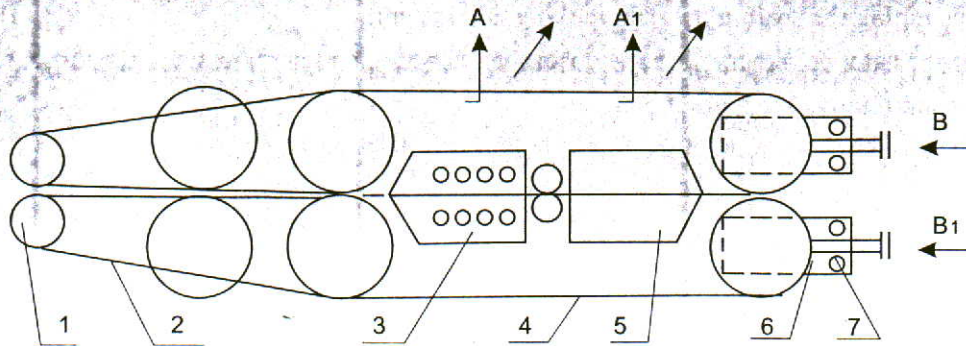
3. Before operating your sealer:

- (1) This sealer is equipped with 3 outer ground sockets. Make sure that it is well connected for the safe producing.
- (2) Due to the first use or too long intermission, electronic heating elements will be dampened. Before the normal operation, several minutes low-temperature preheating is needed.
- (3) Adjust the conveyer table's height and position, making it suitable for the overall size and the level of the bag to be sealed.
- (4) According to the sealing width desired, regulate the position of the scaling width regulator.
- (5) According to the sealing material's thickness, regulate the clearance between both the heating blocks and both the cooling blocks.

4. Operation:

- (1) Switch on the power, the indicating light will flash. Meanwhile, all belts workn synchronously.

AUTOMATIC BAND SEALER



1.Guiding wheel 2.Guiding belt 3.Upper and lower cooling blocks 4.Sealing belt 5.Upper and lower heating blocks 6-Driven wheel support 7-Regulating screw

(2)Micro-adjust the knurl wheel knob,and then make it operate Regulate the pressurt to and appropriate level.

(3)As soon as turn the heating switch on, the green light of the electric temperature controller will flash. According to the nature and the thickness of the packing bag regulate the temperature controller to an appropriate level.

We can get the flexibility of regulating the temperature because of the adjustable speed.

After a moment's heating, the red light of the temperature controller flashes, indicating that it has achieved the temperature desired. Then, we can trial-seal the packing bags scheduled,and according to the sealing condition, see whether we should regulate the temperature, the speed and the pressure of the knurl wheel(printing wheel), so as to obtain the finest sealing result. The sealing works continuously.

- (4)Decide whether to open the fan or not to cool in accordance with the thickness of the sealing material.
- 5.Put level the sealing sides of the packing bag, convey then inward, lined with the regulator.Gripped by the belt, the sealing sides can move forward automatically. At that moment, please not push in or pull out by force. Otherwise irregular sealing or breakdown will happen.
- 6.When we find the sealing belt or the heating block adhered dirty, We'd better stop the sealer and clear it.

AUTOMATIC BAND SEALER

7. Ways of exchanging the sealing belt and making adjustment.

- (1) Remove the safety over, and turn the absorber of heating and cooling set in the direction of A and A1. Lift and remove the guiding belt.
- (2) Push the driven wheel in the direction of B. Remove the sealing belt.
- (3) Assemble the new sealing belt, and the upper and lower guiding belt.
- (4) Return the driven wheel and the heating and cooling set to the original position.
- (5) Put through the power supply, operate the pulley which drives the belt, and begin to test the machine, If irregular sealings appear on the belt, we can make an adjustment through with the safety cover: the machine can work continuously after heated.
- (6) Equipped with the safety cover: the machine can work continuously after being heated

8. Counting system:

- (1) If the sealing counting number is more than 4 figure, set the zero switch, count again.
- (2) If the counting is unnecessary, push down the counting switch.

9. Ways of altering horizontal sealer to vertical one (or called horizontal and vertical dual-purpose sealer.)

- (1) Clamp the 2 tripods and 2 cross-pieces with screw M4, with the concave of the tripods inward and that of the cross-pieces downward.
- (2) Loosen the input and output knob of the conveyer table. Pull out the conveyer table, remove the knob and the clamping screws, and then remove the conveyer table.
- (3) Assemble the conveyer table on the vertical tripod, fasten the clamping knob.
- (4) Remove the horizontal short shaft and assemble the vertical long shaft and umbrella gear base.
- (5) Put the long shaft into the axle hole of the main body of the sealer, while horizontal support into the vertical support. Assemble and fasten the height regulator.
- (6) Vertically place the sealing machine, then the vertical sealer can work.

10. Ways of installing the console sealer

- (1) Install the lower frame on the chassis. Put the upper frame into the slot of the lower frame. Adjust the height, and then assemble 4 knobs.
- (2) Remove the back cover of the lower part of the sealer. Assemble the sealer on the frames with four M5 screws.

11. Installation of the printing wheel and ways of changing words.

- (1) Remove the safety cover, loosen the pressure knob of knurl wheel.
- (2) Remove the lower and upper guiding belts, as well as the clamping screws on the printing shaft.

(3) Lift t
with
(4) Asse
And
the s
fan b
sealin
can c

Access

AUTOMATIC BAND SEALER

- (3) Lift the printing wheel base, separate the printing and the rubber wheel, and pull out the knurl wheel with hands. And then assemble the wheel or do it after changing printing words.
- (4) Assemble removed spares in step (2) and (1). Adjust the pressure of the printing wheel (knurl wheel). And then we can trial-start the sealer.
- How to Stop the Sealer:** In order to prolong the service life of the sealing belt, we are required to return the temperature regulator to the zero position and to open the fan before stopping the sealer. At this moment, the temperature on the indicator begins to fall, while the sealing belt is still operating. About several minutes later, the temperature drops below 100°C. Then, we can close the fan, and turn off the switch of the power supply.

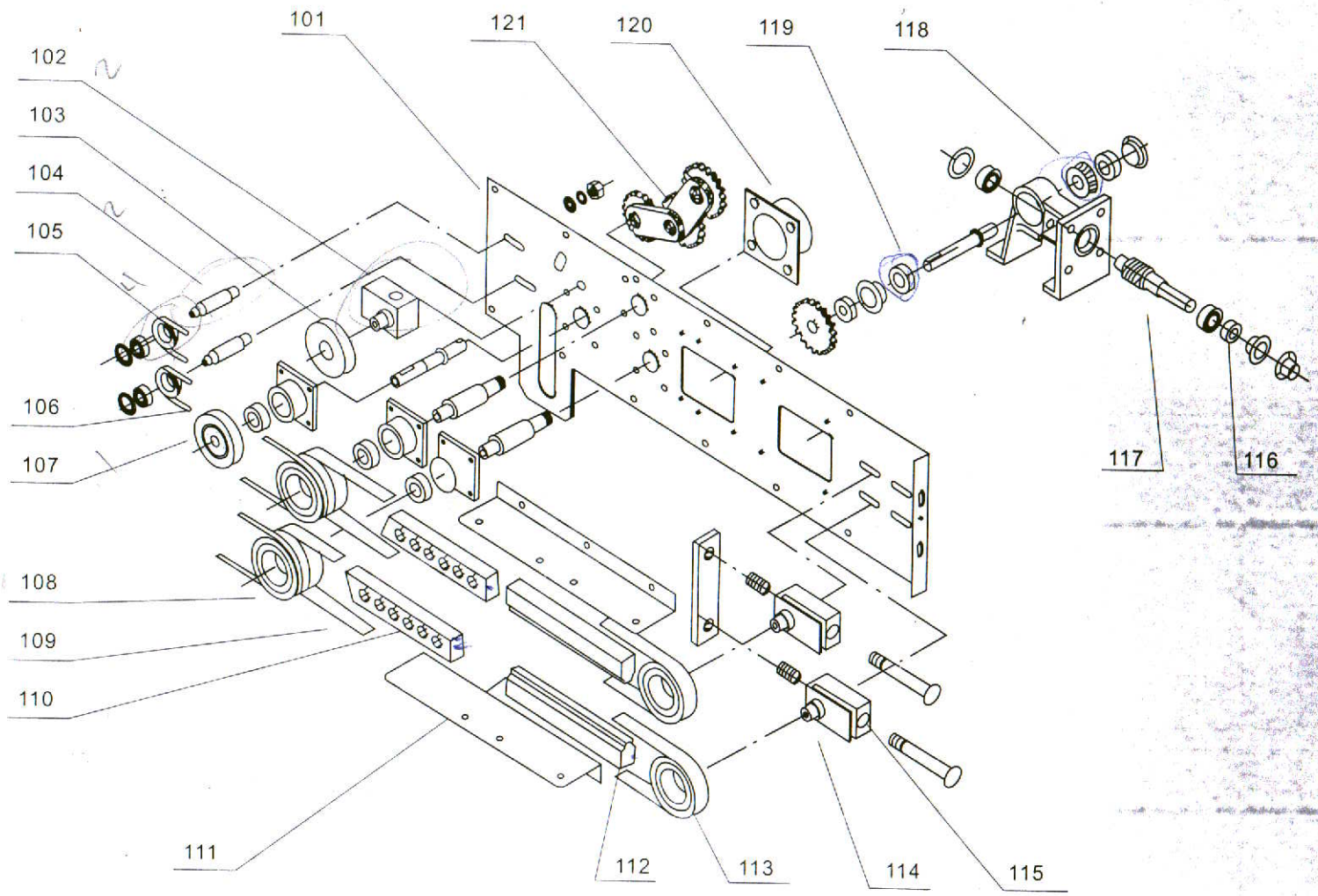
Accessories:

Name	Count	Name	Count
Sealing belt	4	Power line	1
guiding belt	4	Circuit plate	1
Unadjustable spanner	2	Screwdriver	2
Rubber wheel	1		

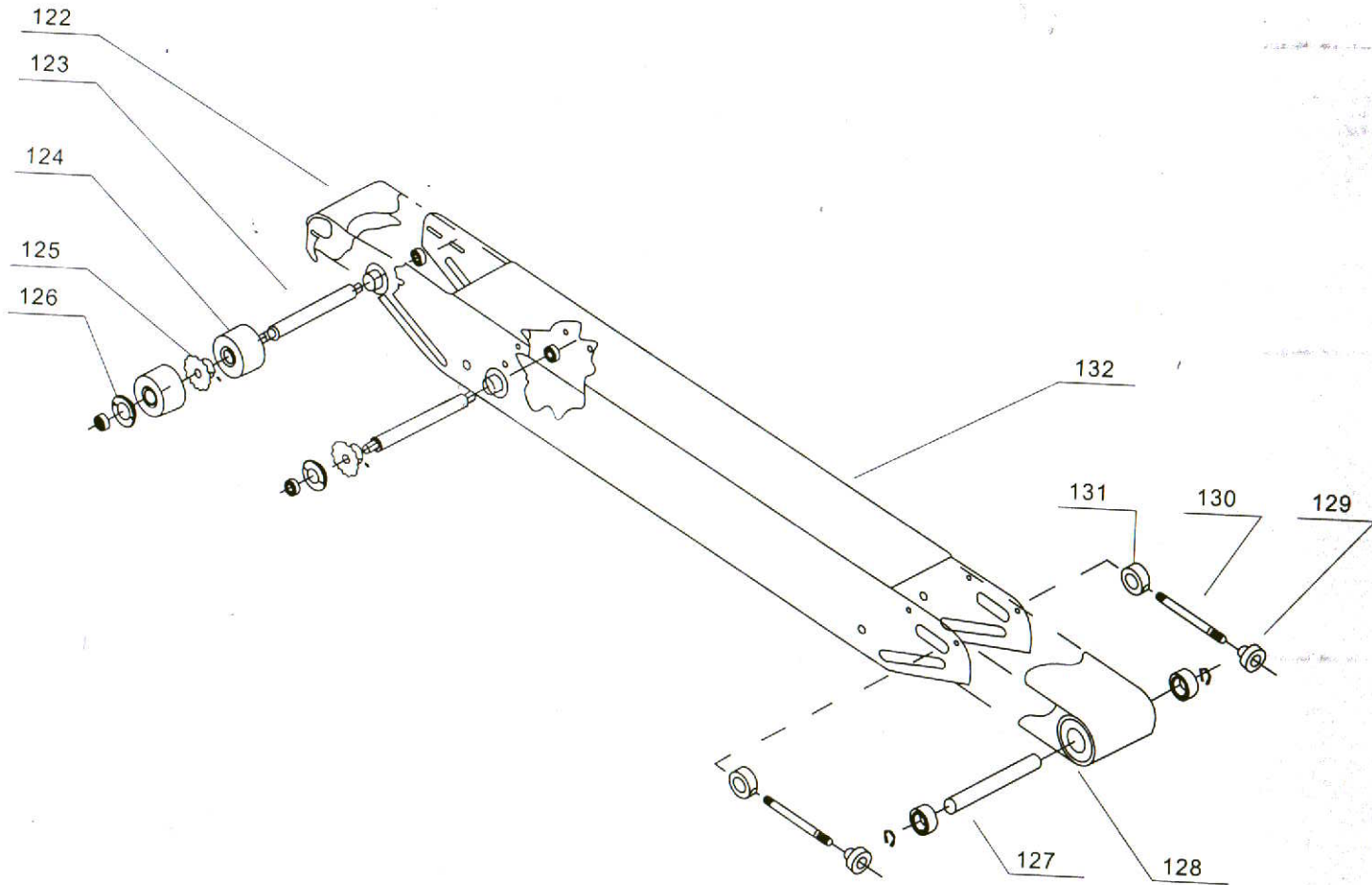
MADE
602-269 2072

AUTOMATIC BAND SEALER

IPS BEET -12

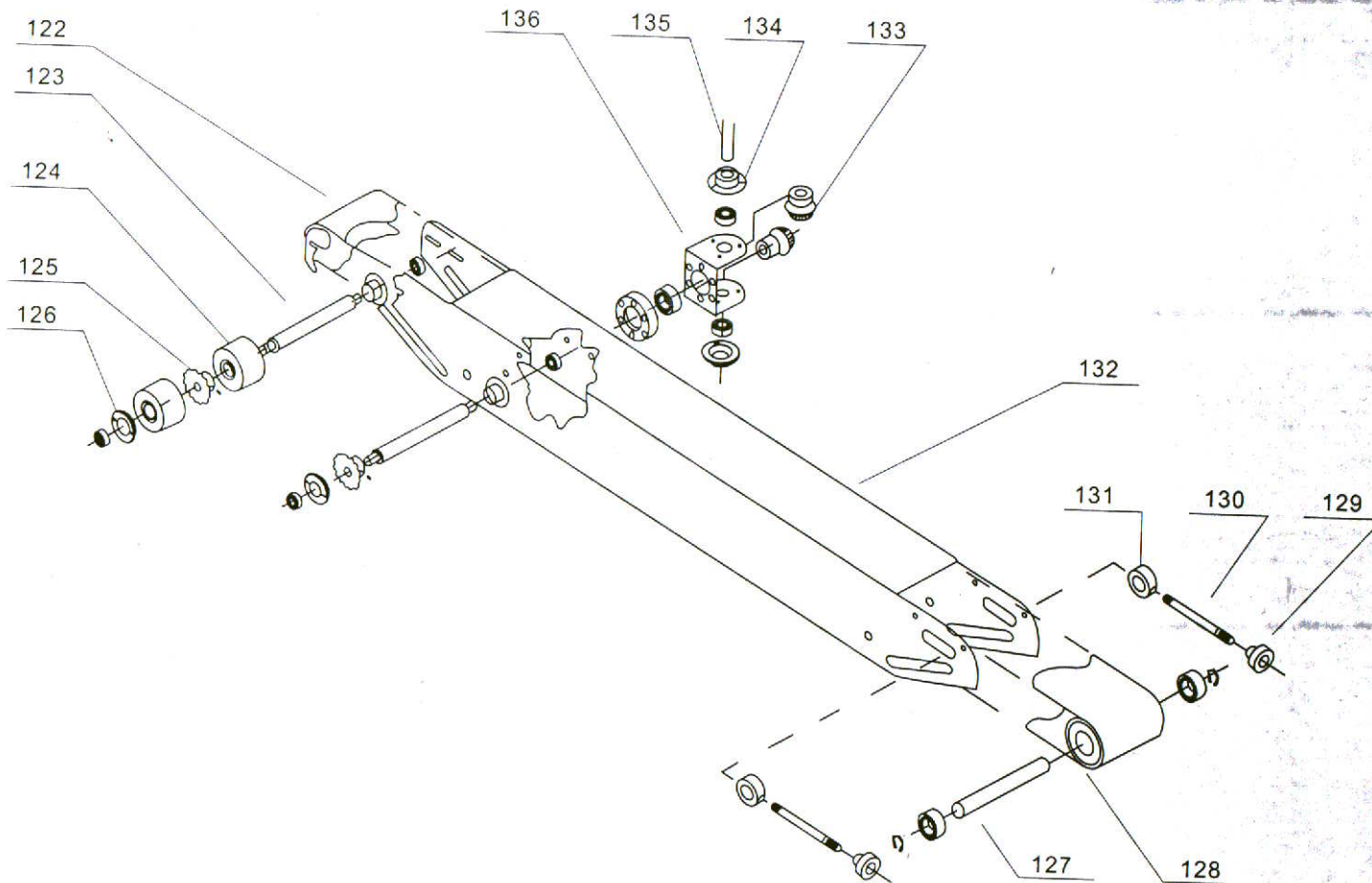


ER-800 SP ARE PRE PATRS FIGURE



Fr-800 | Conveyor Figure

AUTOMATIC BAND SEALER



FR-800 II Gonvgor Figure

CC-6201

